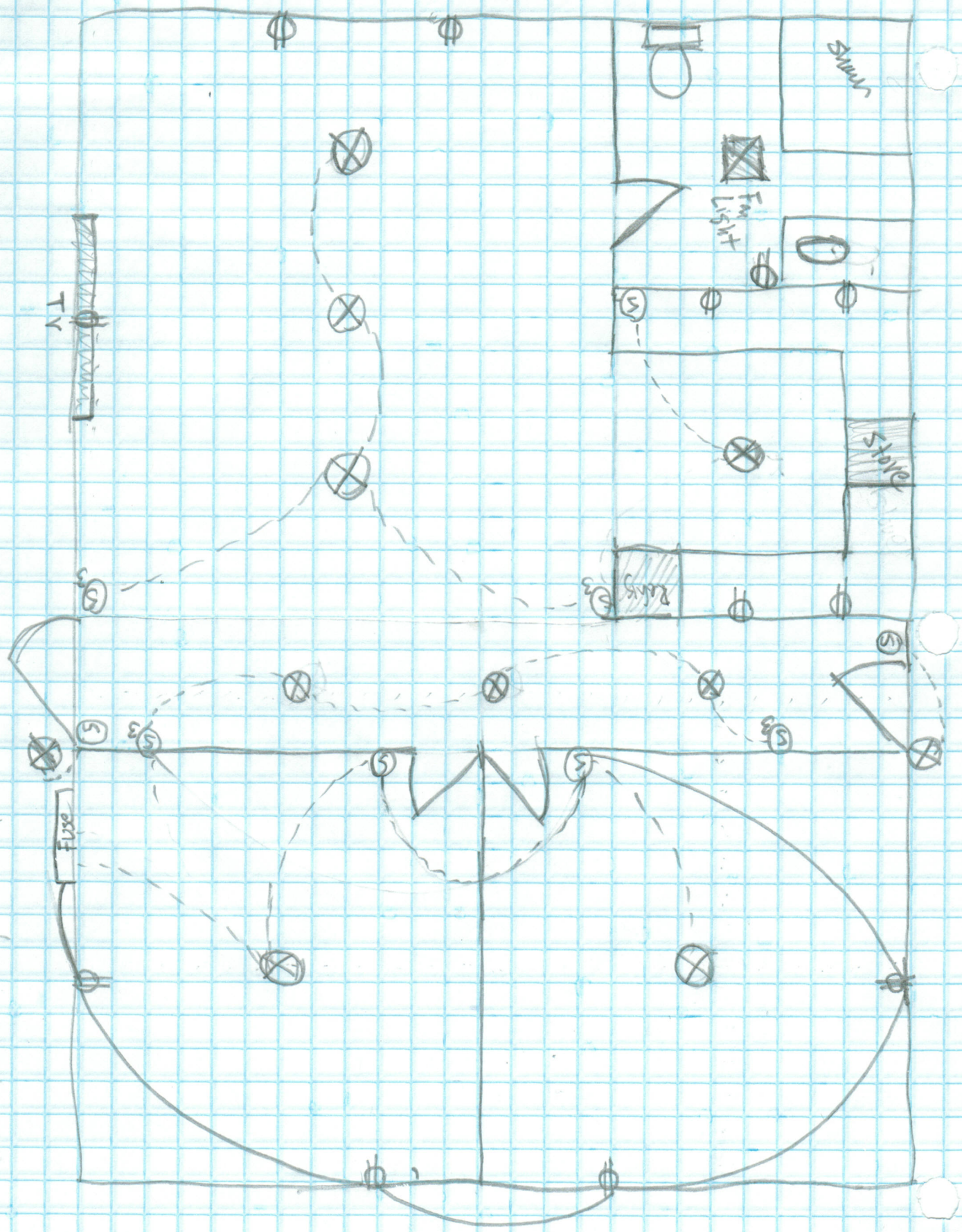


Handwritten text on the left margin: 2000-11-20, 10:30 AM



TV

Shower

Table  
Light

Stove

Desk

Fire

#1 • 2 Bedrooms on same circuit: 2 lights, 2 switches, 4 outlets

#2 • Hallway circuit: 5 lights, 1 3way switch, 2 switches  
+ outside lights

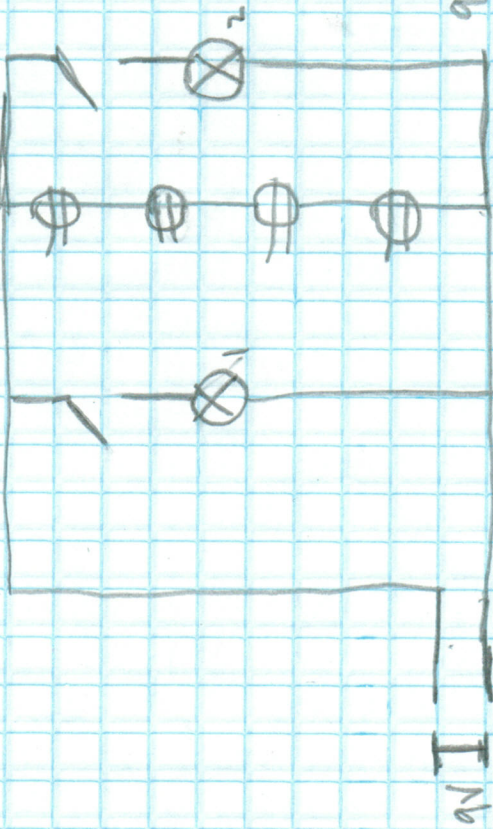
#3 • Living Room circuit: 3 lights, 3 outlets, 2 3way switches

#4 • Stove circuit: 240

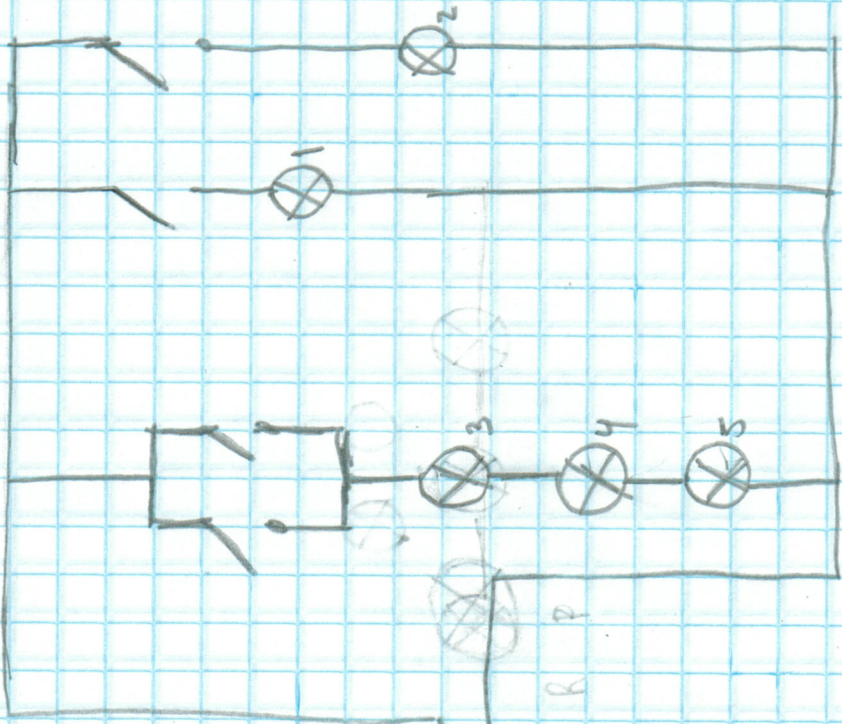
#5 • Refrigerator circuit:

#6 • Bathroom circuit + kitchen light: 2 lights, 2 switches 4 outlets

#1 Bedrooms



#2 Hallway + Outside



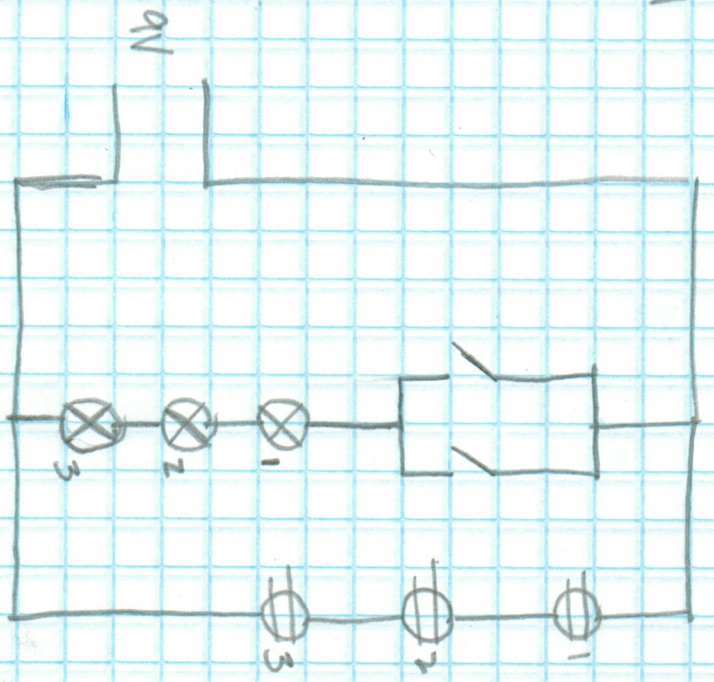
V I R P  
Lamp 1  
Lamp 2  
Lamp 3  
Lamp 4  
Lamp 5

V I R P  
Lamp 1  
Lamp 2  
Lamp 3  
Lamp 4  
Lamp 5

V I R P  
Lamp 1  
Lamp 2  
Lamp 3  
Lamp 4  
Lamp 5

V I R P  
Lamp 1  
Lamp 2  
Lamp 3  
Lamp 4  
Lamp 5

#4



V

1.5V

1.5V

1.5V

1.5V

1.5V

1.5V

